

WEEK 6

5.6 Kairui Su

Replace the 4HB solvent

Anhydrous ethanol was used to reconfigure 4HB for the solution, and the difference between it and methanol in response to 4HB was verified.

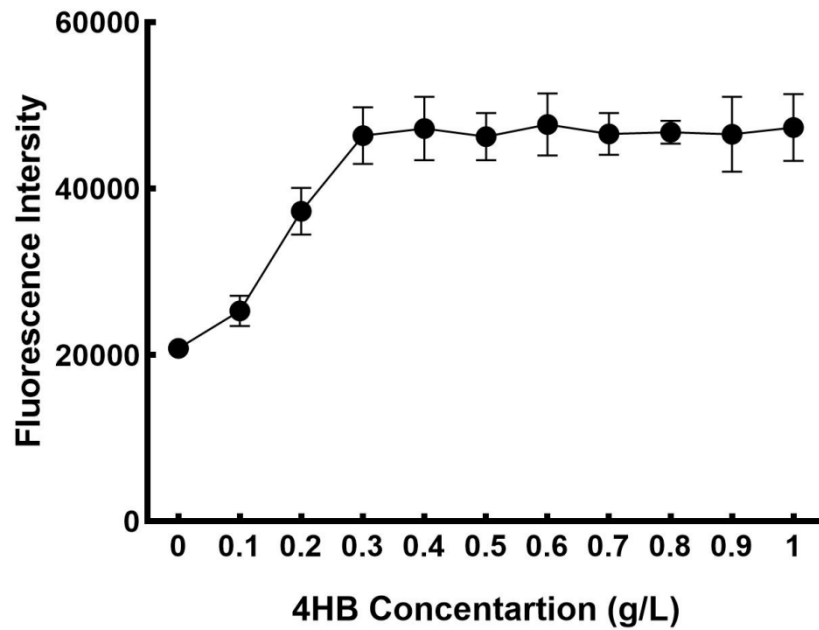


Figure 1 Verification of induction effect of ethanol dissolved 4HB

It could be seen that wide type strains were more sensitive to 4HB ethanol solution than 4HB methanol solution, reaching the highest response value at 0.3 g/L.