

WEEK 4

4.25 Zishu Yang

Replace the ori of vector

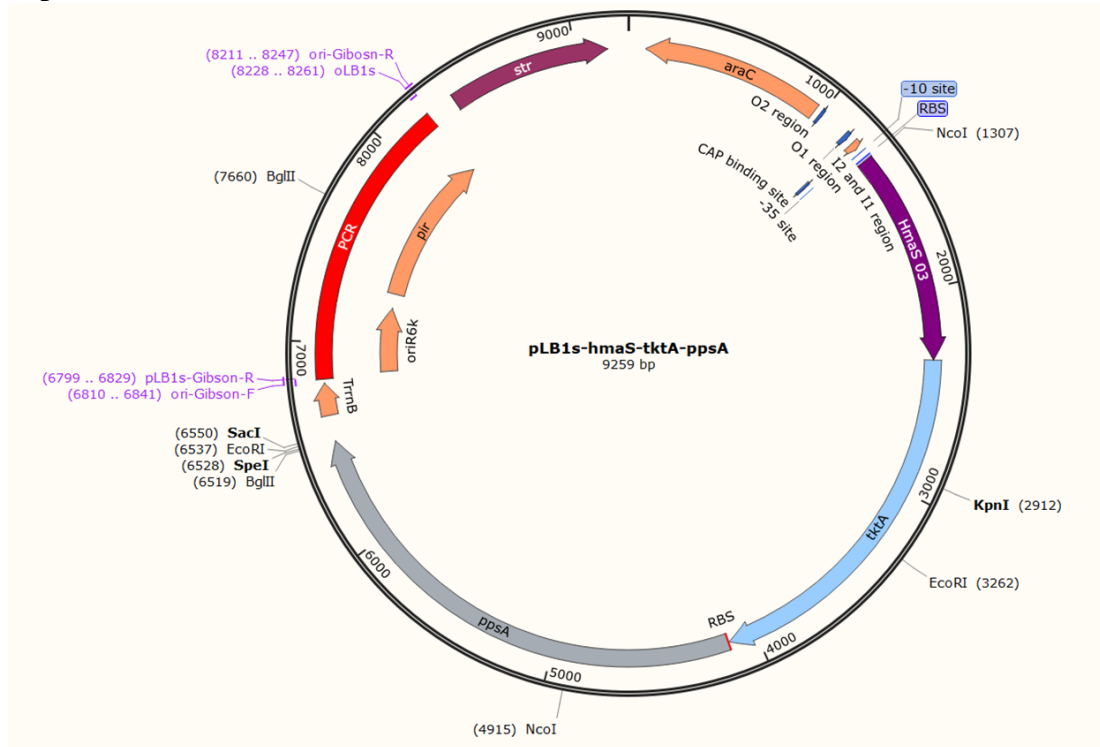


Figure 1 Plasmid profile of PLB1s-hmaS-tktA-ppsA

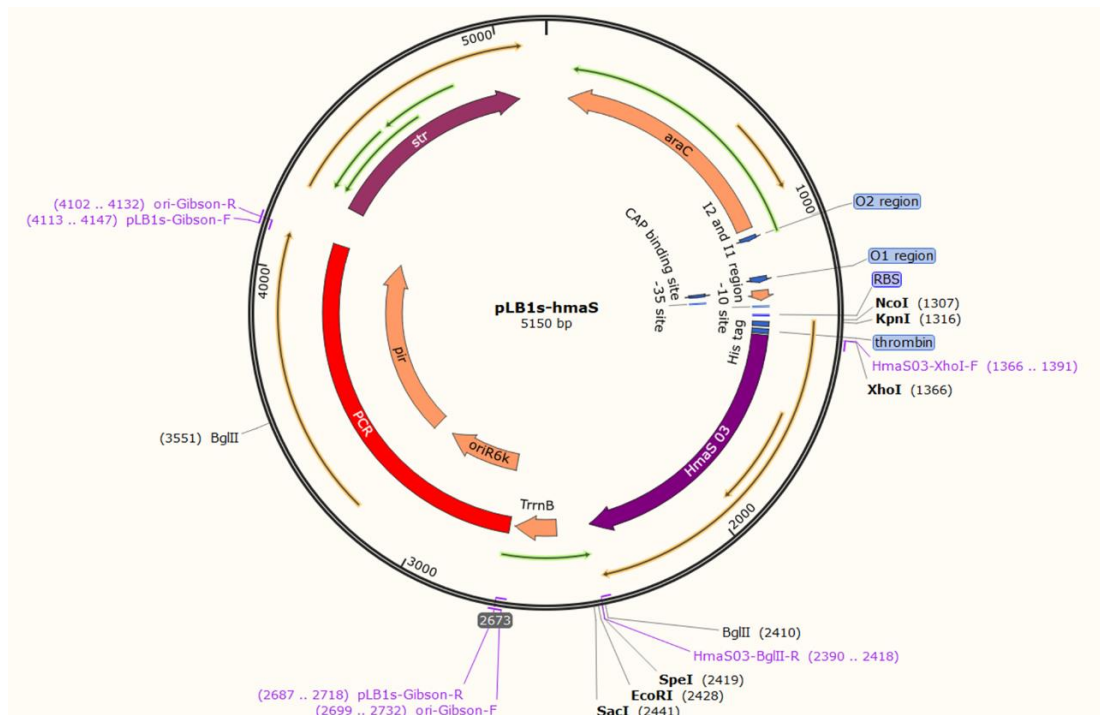


Figure 2 Plasmid profile of PLB1s-hmaS

In the engineering plasmid replacement vector, we used Gibson ligation and

electrophoresis detection for the bacteria replaced by the PLB1s-hmaS vector and PLB1s-hmaS-tktA-ppsA vector respectively after PCR. We also carried out the inoculation of the PLB1s-hmaS vector to replace the No. 4 bacteria and expanded the culture of the PLB1s-hmaS-tktA-ppsA vector to replace the No. 6 bacteria.

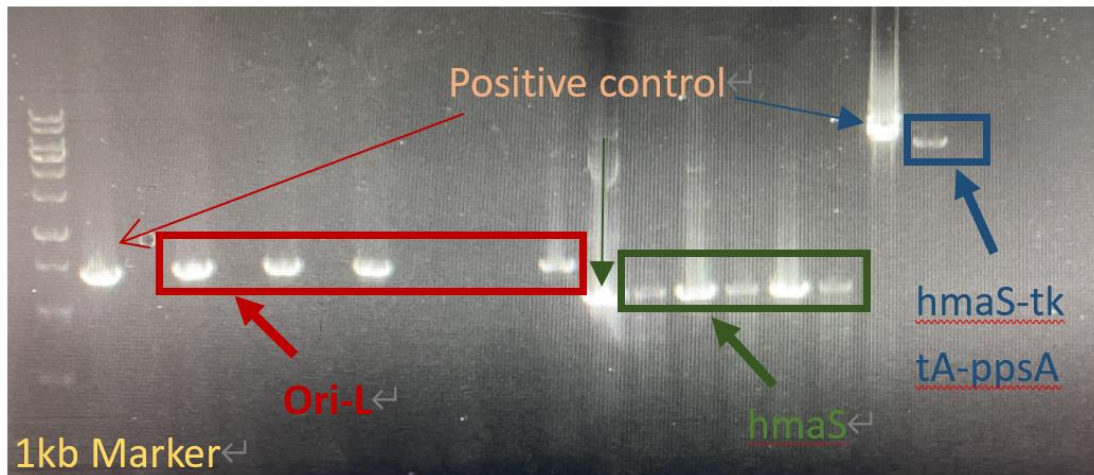


Figure 3 Agarose electrophoresis diagram of engineered plasmid replacement vector